

Stealth Acoustics



Putting Aesthetics Over Technology



Quality Audio Should Be Heard - Not Seen

Today's multi-channel surround sound and whole-house audio systems require multiple speakers located throughout the listening environment. The result can be an ever-growing number of intrusive grilles and speaker boxes that compete with the carefully designed décor of your living space.

Discriminating listeners demand great sound *and* great looks – high performance audio systems that deliver impeccable performance yet blend seamlessly into their environment with zero aesthetic compromise.

Stealth Acoustics' totally invisible speakers deliver unprecedented full-range sound and are the perfect solution for completely concealed multi-room audio, home theater or high performance two channel listening systems.

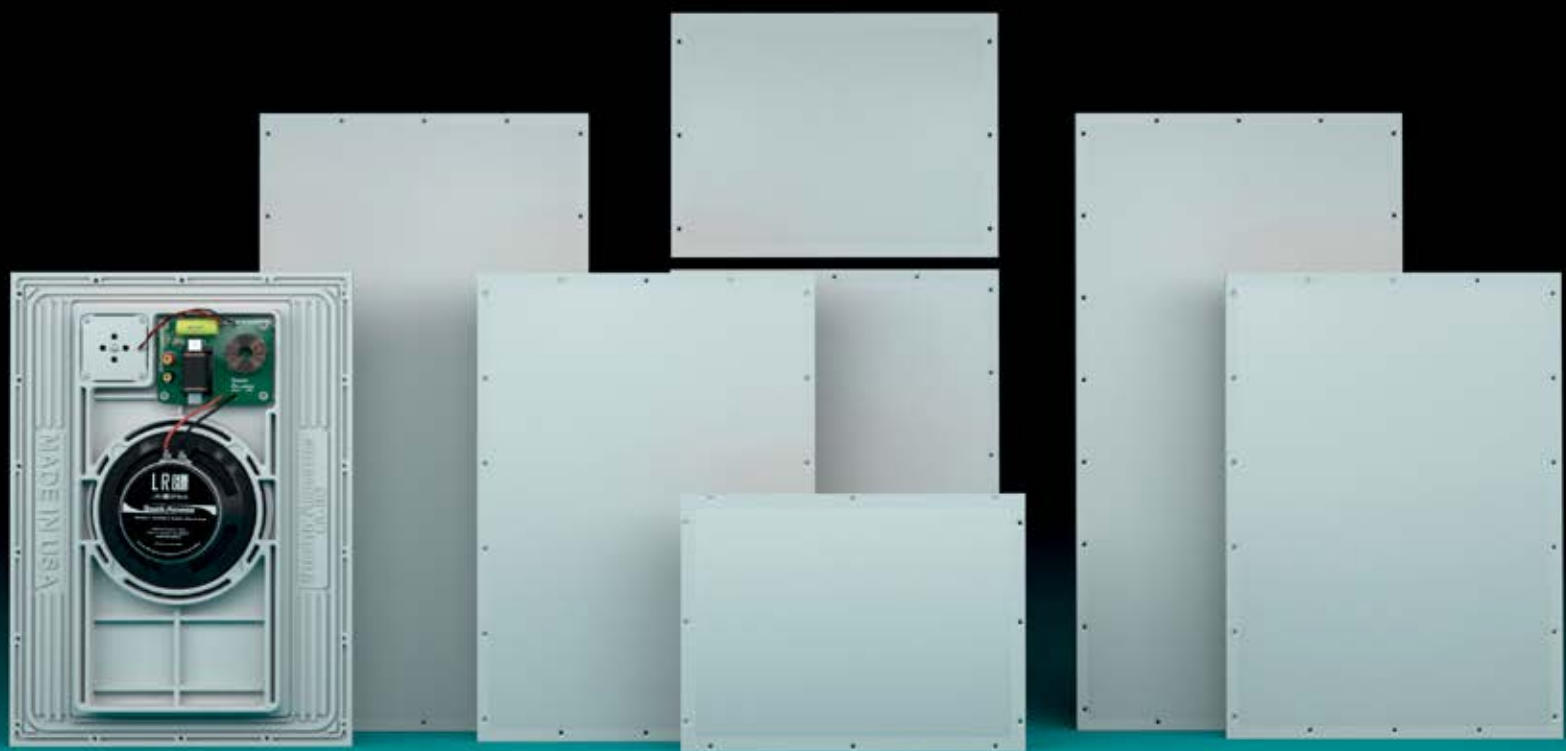
Stealth Acoustics provides all components necessary to design and install invisible audio systems:

- Totally invisible full-range speakers
- Totally invisible subwoofers
- Pro-grade amplifiers
- A complete line of installation accessories

The highest level of performance occurs when using Stealth Acoustics amplifiers to power our speakers, but they also perform exceptionally well with common amplifiers, zone audio systems, or AV receivers. Our invisible speakers can be connected to any existing audio system without the need for special processing equipment.



Stealth Acoustics LR3g



Invisibility Reinvented - The LineaResponse G™ Series



Bridging the Gap Between Audiophile's Ears and Designer's Eyes

Introducing the all new LineaResponse G™ series - the next generation of totally invisible speakers from Stealth Acoustics.

Building on our award-winning line of invisible speakers, we've incorporated all new injection molded frames, low profile woofers, refined crossover networks, and an entirely new face panel material that delivers unmatched warmth, realism and depth of sound – all while making installation even easier.

No fatigue, no lost detail, just the best sounding family of totally invisible speakers and subwoofers available in the world.

LineaResponse G™ technology provides a true and pleasant voicing to our speakers, allowing them to output full and natural sound. With a complete product line to choose from and robust power

handling, the LineaResponse G™ provides for great sound at the listening levels expected in modern music and home theater systems.

LineaResponse G™ full range invisible speakers and subwoofers, coupled with our amplifiers provide a total “system” approach to invisible speakers, providing the best possible sound while eliminating unsightly grilles and bulky boxes used with traditional speakers. This really is “The End of Aesthetic Pollution™” when it comes to making the right speaker choice for your home or project.



Stealth Acoustics LR4g

Born From Experience and Built For a Lifetime



Hand Made With Care In the USA

Stealth Acoustics is a division of Dimensional Communications - a premier systems integration firm based near Seattle, WA USA. For over 37 years the direct experiences derived from countless integration projects have framed everything we do at Stealth Acoustics. We have systems integration in our blood and know what works when creating great sounding and reliable systems.

Finding a need for an invisible audio solution in 2001, we began an extensive research and development cycle, debuting our first model in 2003. Since then, we have worked continuously to improve the sound quality, look, and ease of installation of our products. As the world-leader in invisible speaker technology, Stealth Acoustics offers a wide variety of product options and brings years of in-field experience to the table.

Stealth Acoustics provides the quality products, service, and support expected from one of the best audio manufacturers in the world.

Reliable and Protected

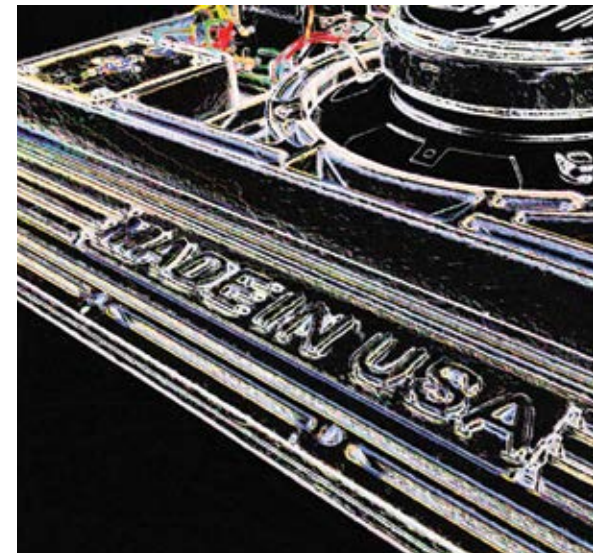
Each Stealth Acoustics invisible speaker is hand-crafted to exacting quality standards. This ensures reliable long-term performance, using over-provisioned components and self-resetting protection circuits on each speaker.

Quality Control

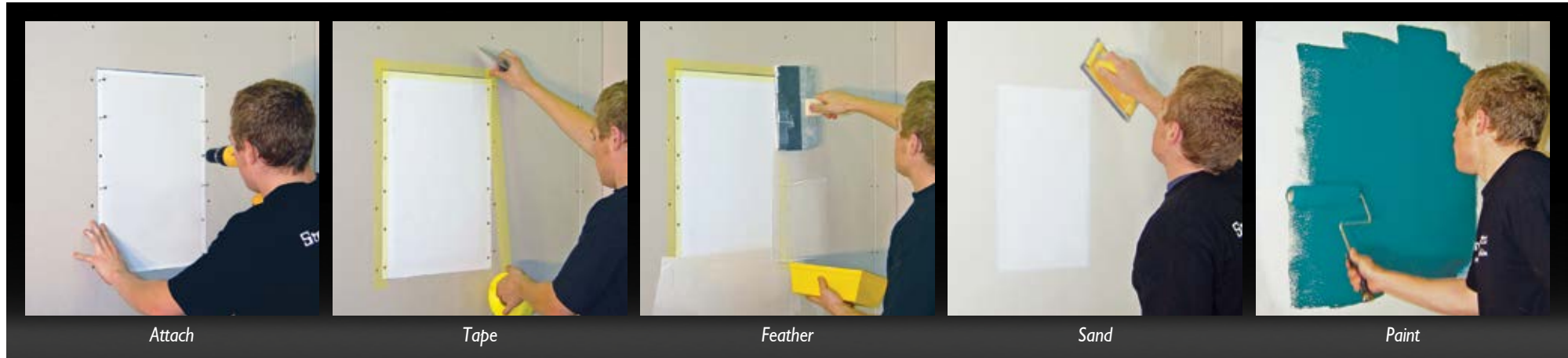
Every Stealth Acoustics invisible speaker is individually tested twice before shipment. First, the speaker is analyzed electronically and then each speaker is listened to by human ear to assure top quality sound.

Warranty

All Stealth Acoustics invisible speakers are covered by a 5-year product warranty and all electronics feature a 2-year warranty.



Simple Installation



Installs Like a Standard Drywall Patch

The installation process is as simple as fitting a drywall patch and the speakers may be finished with a number of common modern methods.

The speakers are built on a solid injection molded frame that contains the traditional drivers and crossovers found in high performance speakers. This portion mounts directly to the structural framing. The face of the speaker is smooth and durable and is designed to finish seamlessly with the wallboard surrounding it.

Stealth Acoustics' speakers are equally at home in the wall or ceiling and the edges of the speaker panel fit flush to the surrounding wallboard. The seams are taped and spackled using standard materials and techniques. Simply sand the seams and apply your desired finish.

Finish options include latex paint, flat finish, orange peel texture, light plaster, light wallpaper, or light fabric. Custom finishes, such as wood veneer, are also available.



Stealth Acoustics LR8c

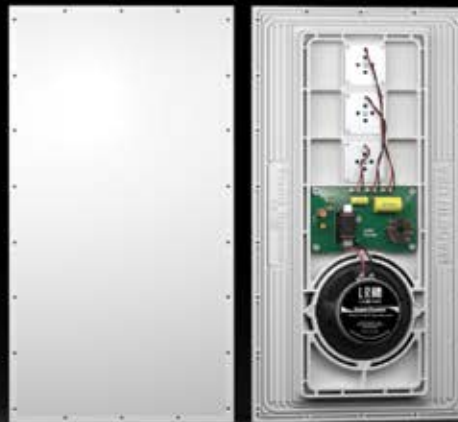
LR4G

FULL RANGE, 6-ELEMENT,
2-PANEL SYSTEM



LR3G

FULL RANGE,
3-WAY PANEL



LR8G

FULL RANGE,
2-WAY PANEL



As the flagship of the Stealth Acoustics speaker line, the LR4G is the first invisible speaker to incorporate a component style design. This high-powered, three way speaker features separate high/mid frequency and low frequency panels controlled by a single integrated crossover network. The LR4G incorporates one low profile 8" woofer, four directly coupled neodymium midrange drivers and one high-frequency driver aligned in the Stealth Quad-Balanced Midrange Drive™ configuration. The result is an amazingly articulate invisible speaker system with solid lows, crisp highs and a midrange that has penetrating punch. The LR4G will impress discriminating listeners who seek invisible, audiophile grade, two channel speakers or a dedicated home theater speaker system.

The LR3G achieves a level of audio performance rivaling that of superior visible speakers. The LR3G is a three way system utilizing three high-power neodymium drivers and a low profile 8" woofer. Like all Stealth speakers, the woofer fires into an airtight chamber creating an acoustic lever, activating the 16" by 30" panel for low frequency reproduction. The neodymium drivers are bonded to the interior of the panel face – one for high frequencies and two for midrange frequencies – configured in a manner that creates our Balanced Drive Midrange™.

Perfect for whole house audio, home theater and surround applications, the LR8G is a two way, full range, loudspeaker system. The LR8G utilizes a high-power 8" woofer and a single neodymium high frequency driver in a panel measuring 16" by 22". As with all Stealth Acoustics speakers, the LR8G is equipped with a heavy duty crossover that includes protection circuits on both the high and low frequency sections to prevent damage from excessive power.

SLR8G

FULL RANGE, 2-WAY,
SINGLE STEREO PANEL



The Stealth Acoustics SLR8G is a unique single panel stereo speaker system with the same footprint as a single LR8G (16" by 22"). The SLR8G utilizes a dual voice coil, high-power 8" woofer and two neodymium high frequency elements. The independent channels are totally isolated with separate heavy-duty crossovers. The SLR8G provides quality stereo coverage in small areas such as bathrooms and corridors.

LR6G

FULL RANGE,
2-WAY PANEL



The LR6G is our smallest footprint full range loudspeaker, ideal for background music, secondary listening locations, and light-duty surround sound applications. The LR6G utilizes a high powered 6" woofer and uses the same high frequency components as our larger models. The panel size measures 16" by 12" and will provide an excellent audio solution where space limitation is a factor.

B22G

COMPACT
SUBWOOFER



Small but powerful, the B22G subwoofer is a compact version of the larger B30G and is designed to complement the LRG series speakers when used in whole-house audio systems where extra bass output is desired. Each B22G panel contains one acoustically coupled, low-profile, high-power 8" cone woofer. Pair the B22G with the LR6G, LR8G or LR3G to extend frequency response in any room.

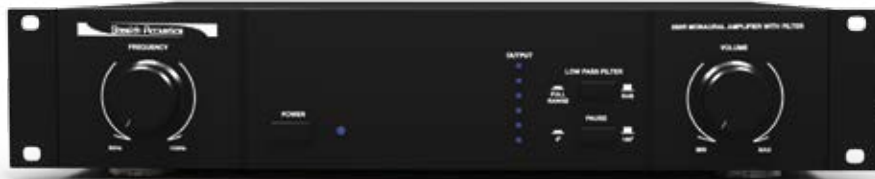
B30G

SUBWOOFER
SYSTEM



The B30G is a two-panel invisible subwoofer system. Using Stealth's Lever Acoustic™ technology, the B30G system provides exceptional bass output. Ideal for home theater, foreground music or whole-house audio systems that need extra bass output, each B30G panel incorporates two acoustically coupled, low-profile, high-power 8" cone woofers. The panels are designed to work in pairs as a monaural output subwoofer, but can be used independently (parallel mode). The B30G panels may be mounted adjacently, stacked or split to achieve desired acoustical results. A simple configuration jumper offers either 16Ω or 4Ω operation, allowing for a wide range of power amplifier configurations.

255R MONAURAL AMPLIFIER WITH FILTER



The 255R is a perfect complement to Stealth Acoustics' invisible subwoofers or any application where serious power is desired. The 255R is an integrated monaural amplifier / crossover system designed as a high-current, low distortion power source for Stealth Acoustics invisible subwoofer panels or other unpowered subwoofer speakers. The 255R delivers a solid 250 watts into an 8Ω load and 350 watts into 4Ω. A variable low pass filter allows for infinite crossover points from 50Hz to 150Hz and can be bypassed for full-range amplification. With a full complement of input and output connectors, the 255R is easily integrated into any audio system.



NEW
2014

SA2400 2-CHANNEL, HIGH-CURRENT AMPLIFIER WITH DSP



The all-new SA2400 dual-channel amplifier provides over 450 watts of high-current amplification per channel. Exclusive to the SA2400 is Stealth's latest DSP platform which offers complete signal processing for each channel with 11 fully parametric equalizers, programmable high and low pass filters (with selectable filter slopes) and fully programmable limiting and delay functions. Use the built-in factory presets to make setting up a Stealth speaker system quick and easy, or save and recall custom tailored settings. The SA2400 is conveniently programmable by using either the front panel display or via a Windows™ based computer and Stealth Acoustics' proprietary USB signal management software.



Stealth Acoustics' products and technology
have earned numerous accolades and awards, including:

And have been featured by:



Invisible Speakers

	LR4G Premium Full Range Speaker	LR3G 3-way Full Range Speaker	LR8G 2-way Full Range Speaker	LR6G 2-way Full Range Speaker	SLR8G Stereo Speaker
Frequency Response	45Hz to 20kHz	45Hz to 20kHz	45Hz to 20kHz	45Hz to 20kHz	45Hz to 20kHz
Power Capacity	200 watts RMS	150 watts RMS	120 watts RMS	100 watts RMS	120 watts RMS per channel
Min. Recommended Power	100 watts	75 watts	60 watts	50 watts	60 watts per channel
Protection	3 independent self-resetting devices (low, mid-range and high frequency)	3 independent self-resetting devices (low, midrange and high frequency)	2 independent self-resetting devices (low and high frequency)	2 independent self-resetting devices (low and high frequency)	4 independent self-resetting devices (low and high frequency each channel)
Sensitivity (1 meter @ 1 watt)	83 dB	83 dB	83 dB	83 dB	82 dB
High Frequency Driver	One 1" neodymium motor	One 1" neodymium motor	One 1" neodymium motor	One 1" neodymium motor	Two 1" neodymium motors
Midrange Frequency Driver	Four 1" neodymium motors	Two 1" neodymium motors	—	—	—
Low Frequency Driver	One 1.5" voice coil, one 8" woofer	One 1.5" voice coil, one 8" woofer	One 1.5" voice coil, one 8" woofer	One 1" voice coil, one 6.5" woofer	One 1" dual voice coil, one 8" woofer
Magnet	One ceramic 20 oz.	One ceramic 20 oz.	One ceramic 20 oz.	One ceramic 15 oz.	One ceramic 20 oz.
System Impedance	8Ω nominal	8Ω nominal	8Ω nominal	8Ω nominal	8Ω nominal each channel
Polar Dispersion	170 degrees horizontal & vertical	170 degrees horizontal & vertical	170 degrees horizontal & vertical	170 degrees horizontal & vertical	170 degrees horizontal & vertical
Width	16" (406 mm)	16" (406 mm)	16" (406 mm)	16" (406 mm)	16" (406 mm)
Height	34" (864 mm) (combined panel height)	30" (762 mm)	22" (559 mm)	12" (302 mm)	22" (558 mm)
Depth	2-3/4" (70 mm)	2-1/2" (64 mm)	2-1/2" (64 mm)	2-1/4" (57 mm)	2-1/2" (64 mm)
Weight	55 lbs. (25 kg) - shipped as pair	44 lbs. (20 kg) - shipped as pair	32 lbs. (15 kg) - shipped as pair	21 lbs. (10 kg) - shipped as pair	19 lbs. (9 kg) - shipped each
Crossover	Passive 3-way @ 500Hz and 3kHz (asymmetrical)	Passive 3-way	Passive 2-way	Passive 2-way	Passive 2-way

Subwoofers

	B30G Subwoofer Speaker	B22G Subwoofer Speaker
Frequency Response	20Hz to 160Hz	30Hz to 160Hz
Power Capacity	120 watts RMS	100 watts RMS
Min. Recommended Power	60 watts	50 watts
Sensitivity (1 meter @ 1 watt)	86 dB	86 dB
Low Frequency Driver	Two 1.5" voice coils, two 8" woofers	One 1.5" voice coils, one 8" woofer
Magnet	Two ceramic 20 oz.	One ceramic 20 oz.
System Impedance	16Ω or 4Ω (selectable)	8Ω nominal
Polar Dispersion	170 degrees horizontal & vertical	170 degrees horizontal & vertical
Width	16" (406 mm)	16" (406 mm)
Height	30" (762 mm)	22" (558 mm)
Depth	2-1/2" (64 mm)	2-1/2" (64 mm)
Weight	45 lbs. (20 kg) - shipped as pair	29 lbs. (13 kg) - shipped as pair
Crossover Frequency	Requires amplifier with low pass filter 50Hz with 18 dB slope recommended	Requires amplifier with low pass filter 50Hz with 18 dB slope recommended

Amplifiers

	255R Subwoofer Amplifier	SA2400 2-channel Amplifier
Mono Power Output	250 watts @ 8Ω < 0.05 THD 350 watts @ 4Ω < 0.05 THD	310 watts @ 8Ω < 0.05 THD 460 watts @ 4Ω < 0.05 THD
Total Harmonic Distortion	< 0.05 % @ 1 watt 4Ω / 100Hz	<0.05 % @ 300 watt 8Ω / 1kHz
Signal to Noise Ratio	86 dB below rated output	86 dB below rated output
Low Pass Filter	50Hz - 150Hz / 18 dB per octave (variable with bypass switch)	DSP based signal processing featuring a 22-band PEQ, variable HPF/LPF, with limiter and delay. Optional Windows™ based DSP programming software included.
High Pass Filter	18Hz / 30 dB per octave (fixed)	
System Impedance	8Ω nominal, 4Ω minimum	8Ω nominal, 4Ω minimum
Current Draw	6.2A @ 350W/4Ω-115/230 VAC/50-60Hz	4.52A @ 1/3 pwr/4Ω-115/230 VAC/50-60Hz
Width	19" (482 mm) with rack ears	19" (482 mm) with rack ears
Height	3-1/2" (89 mm) without feet	3-1/2" (89 mm) without feet
Depth	13-5/8" (345 mm) without knobs	15-11/16" (399 mm)
Shipping Weight	31 lbs. (14 kg)	33 lbs. (15 kg)


The logo features the company name "Stealth Acoustics" in a bold, white, sans-serif font. The text is centered within a white rectangular area that has curved, wave-like edges on the left and right sides.

TOTALLY INVISIBLE SPEAKERS | PRO-GRADE AMPLIFIERS

A Division of Dimensional Communications, Inc.

1220 Anderson Road | Mount Vernon, WA 98274 | StealthAcoustics.com | Toll Free: 888.865.6800 | Fax: 360.424.8872

©2013 Stealth Acoustics